

Welcome to HYDRO PLACE

500 Columbus Drive
P.O. Box 12800
St. John's, NL A1B 0C9
1.709.737.1400
e. info@nalcenergy.com
w. www.nalcenergy.com
w. www.nlh.nl.ca

At Hydro and Nalcor, safety is our first priority. To ensure you have a safe and healthy visit, please ensure the following:



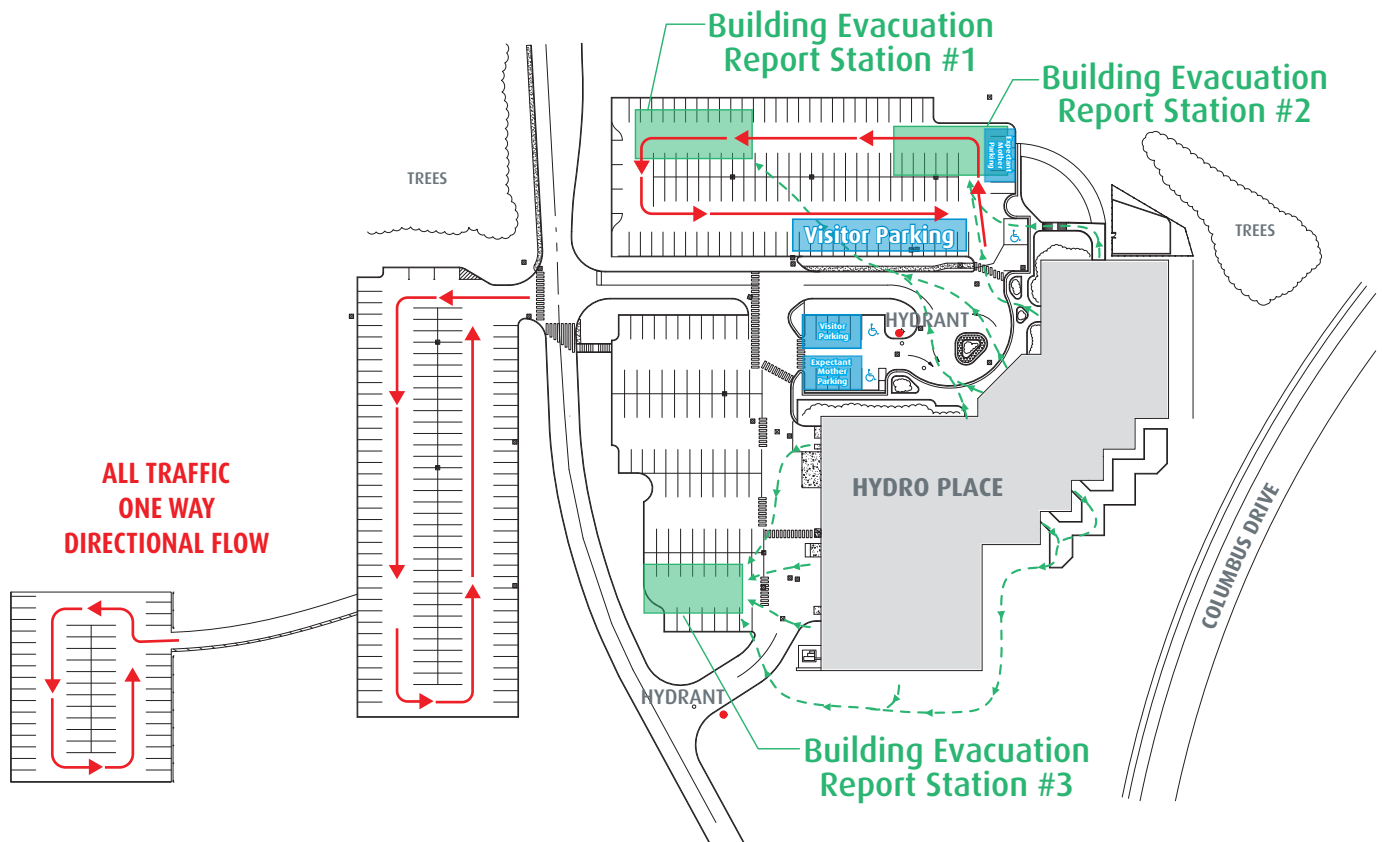
Please **BACK-IN** your vehicle when parking.
Please follow pavement arrows and posted signage



When you arrive, **CHECK IN** at the reception desk and receive a visitor's tag. Your host can inform you of emergency exits and muster stations.



We're happy to be a **SCENT-FREE** workplace – please refrain from using scented products.



Take a
MOMENT
for Safety



PARKING LOT SAFETY AT HYDRO PLACE

Let's ensure we keep each other safe each day.

500 Columbus Drive
P.O. Box 12800
St. John's, NL A1B 0C9
1.709.737.1400
e. info@nalcenergy.com
w. www.nalcenergy.com
w. www.nlh.nl.ca

1 Please **DRIVE WITH CAUTION** in our parking lots and respect the one-way traffic flow.

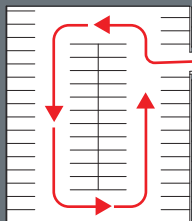
2 **ALWAYS YIELD** to pedestrians and be cautious around turns and when driving between lots.

3 **YIELD** to snow clearing equipment and do not leave vehicles in the parking lot overnight.

4 Please **DO NOT PARK** in

- visitor parking
- accessible parking
- expectant mother parking
- fleet vehicle parking.

ALL TRAFFIC
ONE WAY
DIRECTIONAL FLOW



Take a
MOMENT
for Safety

AFTER HOURS

If working after-hours, security can escort you to your vehicle when they are on duty
(Monday - Friday, 4:30pm - 12:30am)

SECURITY can be reached at extension **1957** or by cell at **693-4091**

If working on a weekend, you may park in visitor parking closest to the building

For information on building closures or changes to building access call the **EMPLOYEE INFORMATION LINE AT 737-1401**

